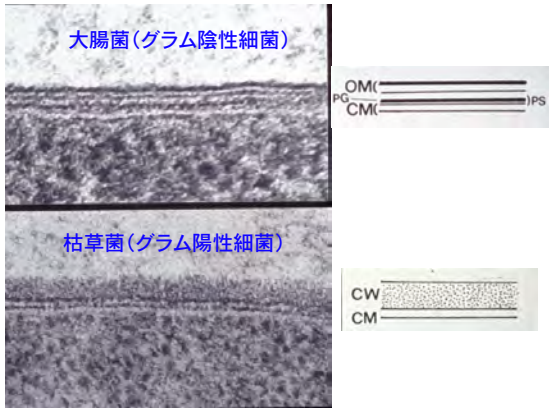
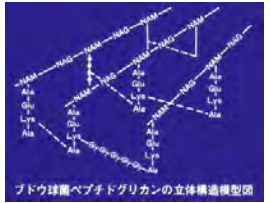
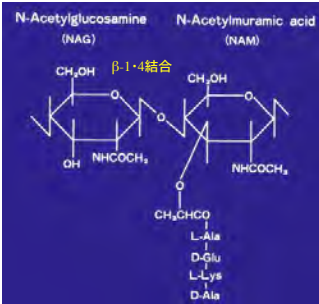


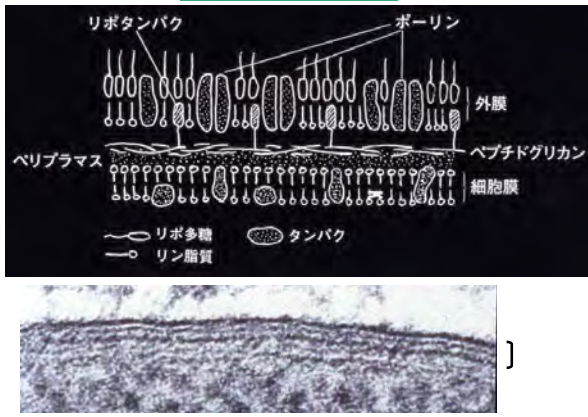
7. 超薄切片法で見た細胞壁の構造



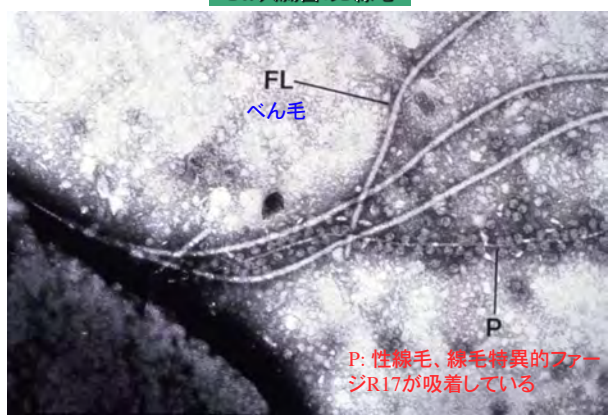
8. ペプチドグリカンの構成ユニットとペプチド鎖の結合



9. グラム陰性外膜



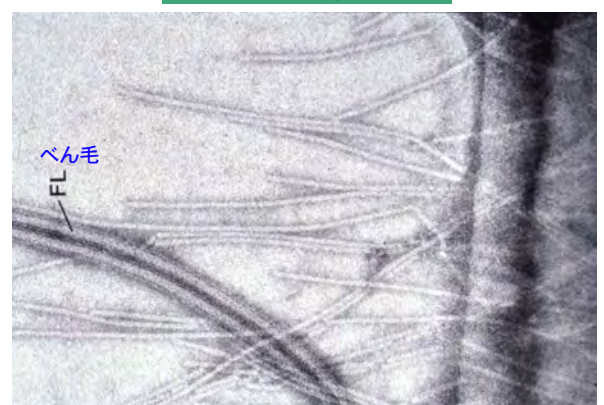
14. 大腸菌のF線毛



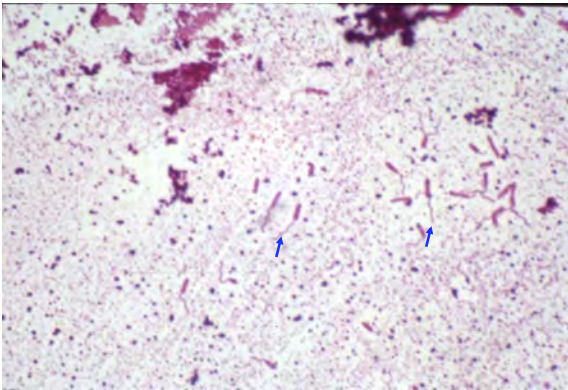
15. 毒素原性大腸菌のもつ線毛CFA/I



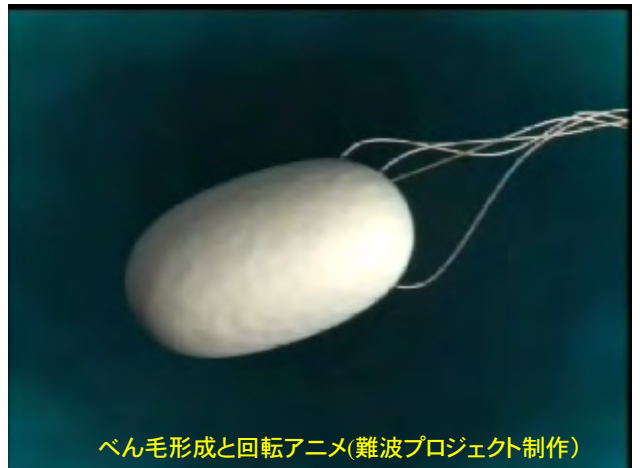
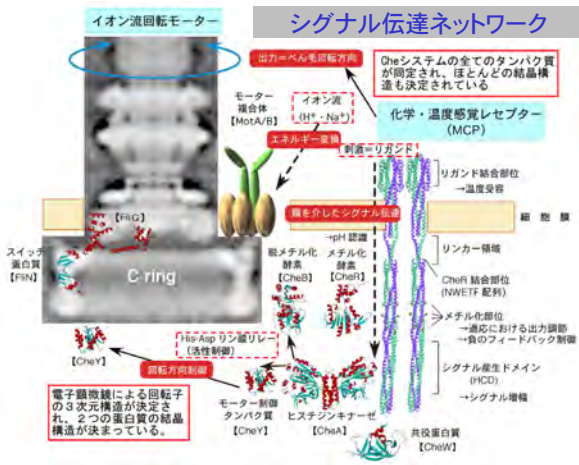
16. 大腸菌のtype I線毛



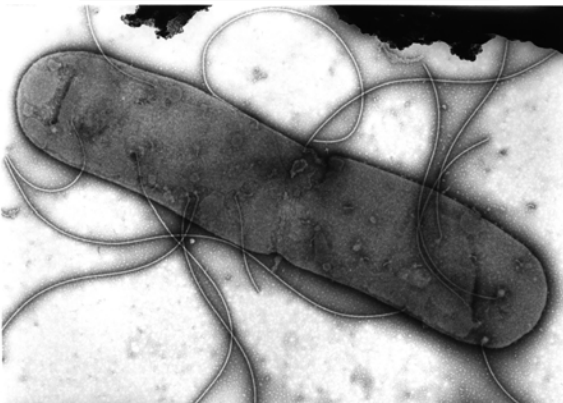
17. 緑膿菌のべん毛染色(戸田法)



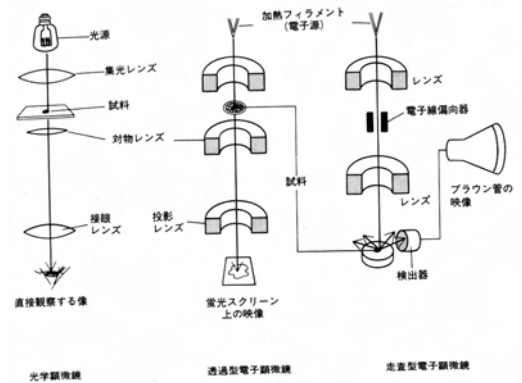
18. 菌体へのべん毛のつきかた



Electron micrograph of Salmonella cell



電子顕微鏡模式図





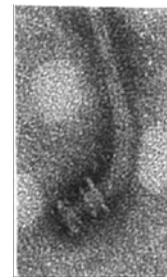
最新の電子顕微鏡

安いもので、
5000万円くらい

Flagellar Structure Observed by Electron Microscopy

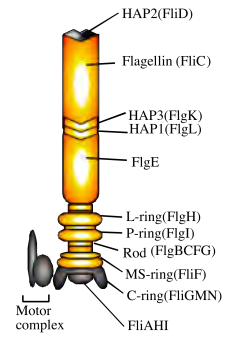


V. alginolyticus



S. typhimurium

50 nm



べん毛の単離プロトコール

- 1) 菌体の回収(低速遠心)
- 2) ショ糖を含む緩衝液にいれる
- 3) リゾチーム処理+ EDTA
- 4) トリトンX-100処理
- 5) $MgSO_4 + DNase$
- 6) EDTA
- 7) 低速遠心
- 8) 10万gで遠心
- 9) 沈殿をバッファーに懸濁