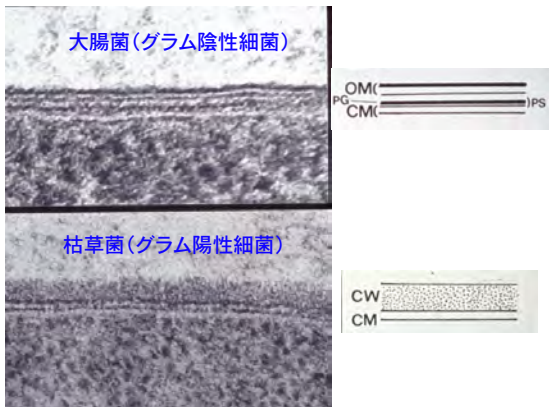
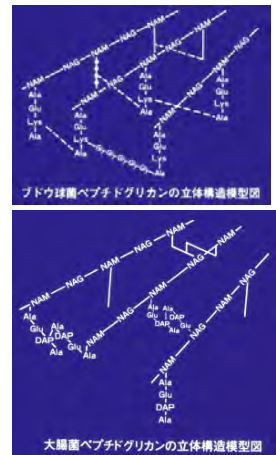
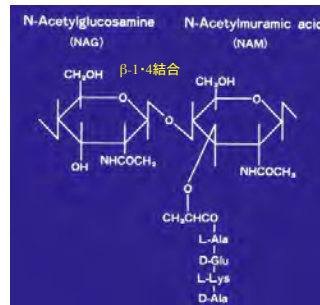


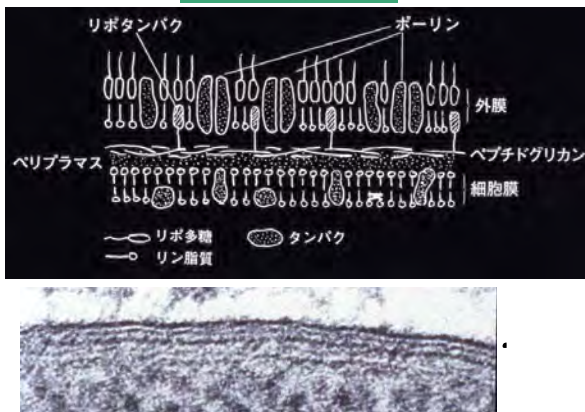
7. 超薄切片法で見た細胞壁の構造



8. ペプチドグリカンの構成ユニットとペプチド鎖の結合



9. グラム陰性外膜



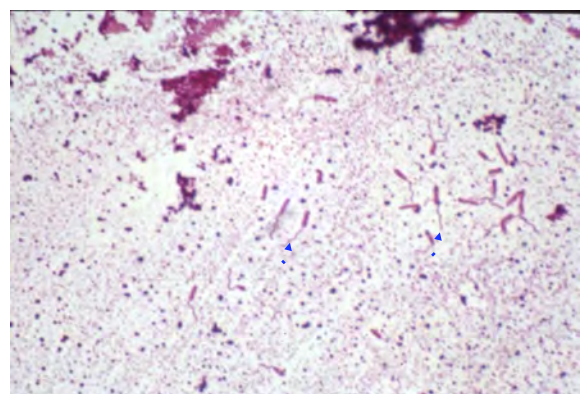
15. 毒素原性大腸菌のもつ線毛CFA/II



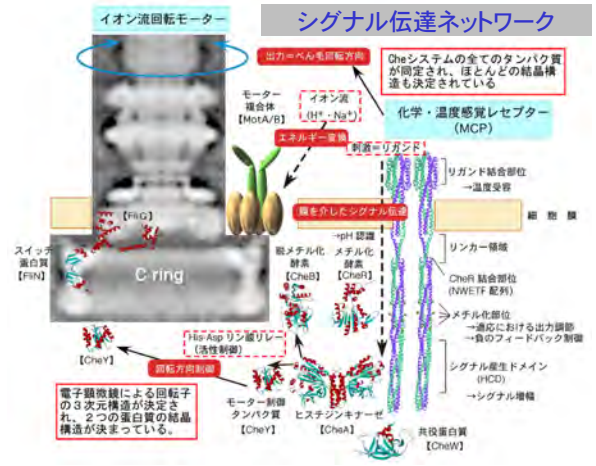
16. 大腸菌のtype I 線毛とべん毛



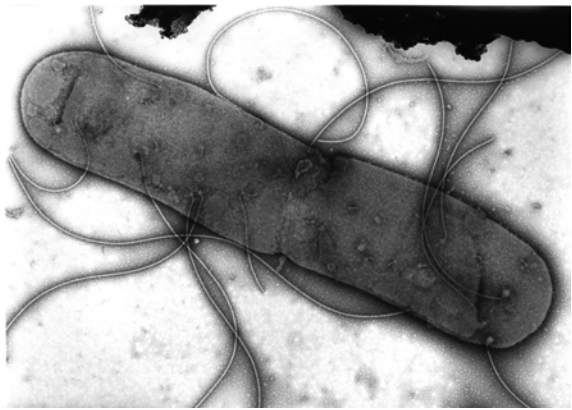
17. 緑膿菌のべん毛染色(戸田法)



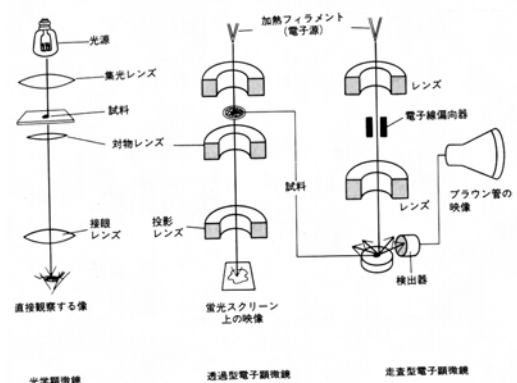
18. 菌体へのべん毛のつきかた



Electron micrograph of Salmonella cell

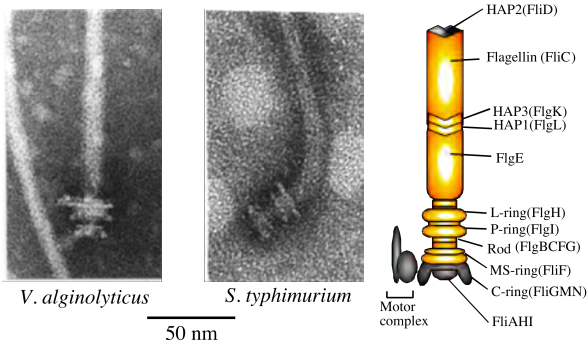


電子顕微鏡模式図



最新の電子顕微鏡
安いもので、
5000万円くらい

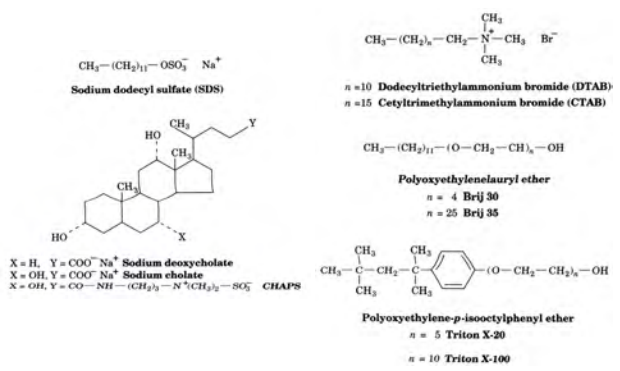
Flagellar Structure Observed by Electron Microscopy



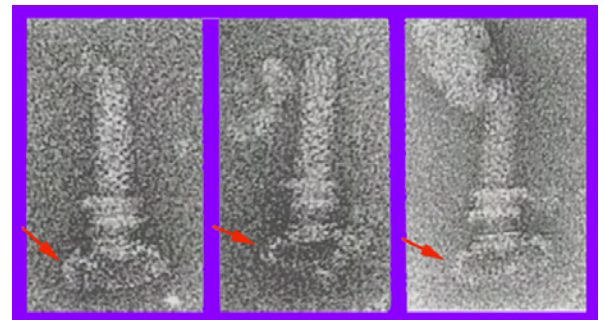
べん毛の単離プロトコール

- 1) 菌体の回収(低速遠心)
- 2) しよ糖を含む緩衝液にいれる
- 3) リゾチーム処理+ EDTA
- 4) トリトンX-100処理
- 5) MgSO₄+DNase
- 6) EDTA
- 7) 低速遠心
- 8) 10万gで遠心
- 9) 沈殿をバッファーに懸濁

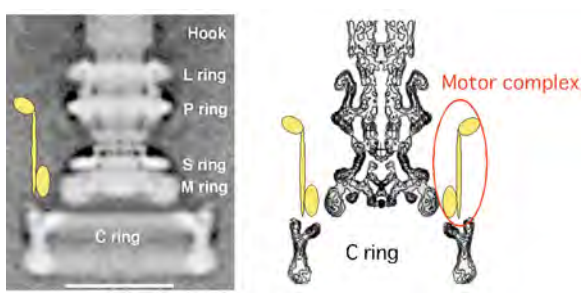
生化学で用いられる界面活性剤



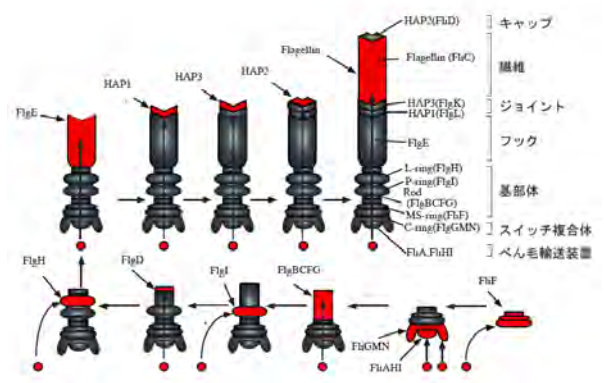
Electron micrographs of hook-basal body and C-ring structure (red arrows)



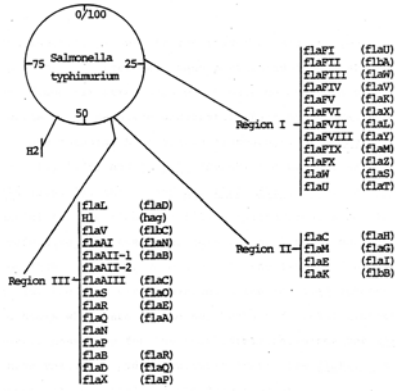
Motor Structure of flagella



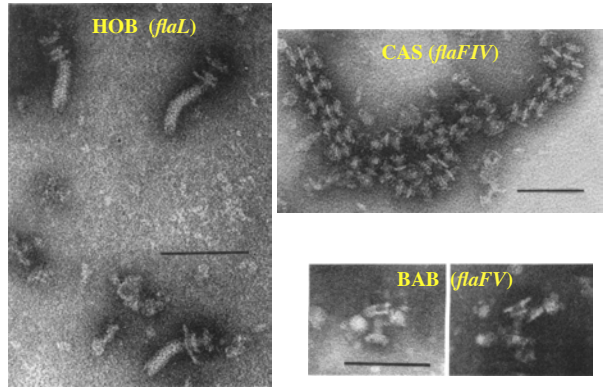
べん毛形成過程のモデル



Chromosomal map of the genes essential for flagellar formation in *Salmonella typhimurium*.

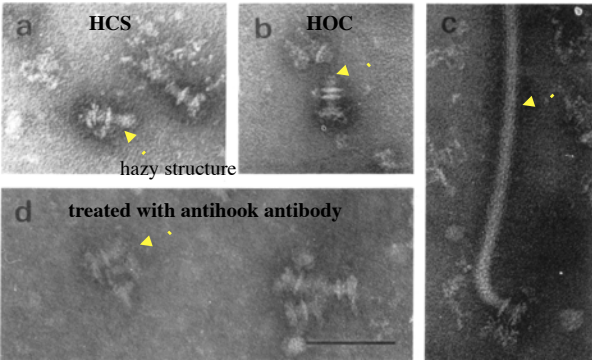


Flagellar partial structures I



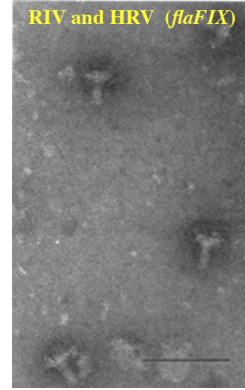
Suzuki et al., J. Bacteriol. (1978)

Flagellar partial structures II: from a *flaFVIII* mutant



Suzuki et al., J. Bacteriol. (1978)

Flagellar partial structures III



Suzuki et al., J. Bacteriol. (1978)

Frequencies of flagellar structures detected in nonflagellate mutants*

Determination	Structural entity									
	IF	HOB	BAB	CAS	RIV	RCT	HCS	HRV	HOC	
Flagellate parent	+++	+	+	+ or - ^d	+	+ or -	-	-	-	-
H ⁺ , H ²	++	+	+	+	+	+	-	-	-	-
flaL	-	++	+	+ or -	+	-	-	-	-	-
flaU	-	++	+	+ or -	+	-	-	-	-	-
flaR	-	+++	+	+ or -	+	-	-	-	-	-
flaFV	-	-	+	+	++	++	-	-	-	-
flaFVIII	-	-	-	-	+	+	++	+ or -	+	-
flaF	-	-	-	++	++	-	-	++	-	-
flaFIX	-	-	-	++	++	-	-	++	-	-
flaFIV	-	-	-	+	+	-	-	-	-	-
flaAI	-	-	-	-	-	-	-	-	-	-
flaAII	-	-	-	-	-	-	-	-	-	-
(motC)	++ ^f	+	+	+ or -	+	-	-	-	-	-
flaAIII	-	-	-	-	-	-	-	-	-	-
flaB	-	-	-	-	-	-	-	-	-	-
flaC	-	-	-	-	-	-	-	-	-	-
flaD	-	-	-	-	-	-	-	-	-	-
flaE	-	-	-	-	-	-	-	-	-	-
flaFII	-	-	-	-	-	-	-	-	-	-
flaFIII	-	-	-	-	-	-	-	-	-	-
flaFVI	-	-	-	-	-	-	-	-	-	-
flaFVII	-	-	-	-	-	-	-	-	-	-
flaFX	-	-	-	-	-	-	-	-	-	-
flaK	-	-	-	-	-	-	-	-	-	-
flaM	-	-	-	-	-	-	-	-	-	-

* The frequencies of IF and flagellar basal structures detected in fraction BMII of flagellate parents and nonflagellate mutants are shown.
⁺ ++. The count of each structural entity from 1/5 to 5x the count of IF in its flagellate parent.
⁺ +. The count of each structural entity from 1/50 to 1/5 the count of IF in its flagellate parent.
⁻ -. The count of each structural entity less than 1/50 the count of IF in its flagellate parent.
^f Paralyzed flagella, which were not discriminated morphologically from the IF of their flagellate parent.

Suzuki et al., J. Bacteriol. (1978)

Stepwise process of flagellar morphogenesis in *Salmonella* inferred from the flagellar structures detected on nonflagellate mutants.

